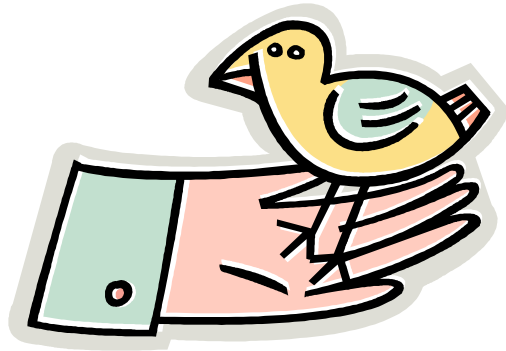


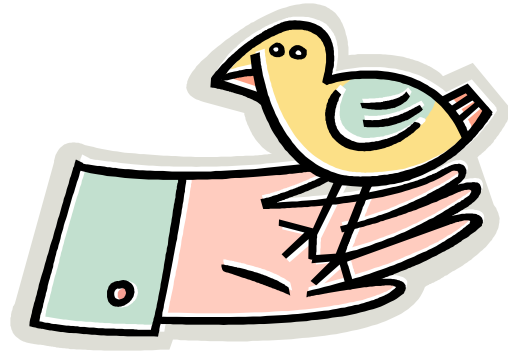
ANALYZING POSITIVE ELEMENTS

- **What would be the payoff for taking these POSITIVE ELEMENTS, all of which are needed, and applying them to SERVICE DELIVERY?**



EXAMPLES OF INTEGRATION OF SERVICE DELIVERY AT ITS BEST – FROM YOUR DIRECT EXPERIENCE

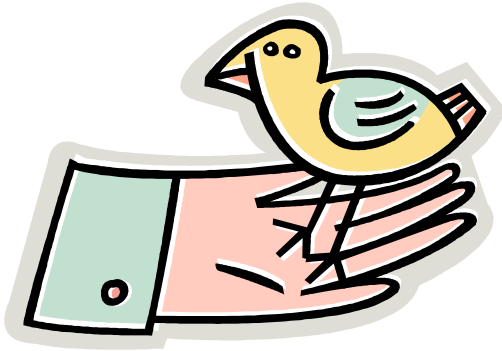
1. At each table someone will give an example of INTEGRATION WHICH REALLY WORKED
2. Choose a table, but only if there is a chair.
3. Speakers, please keep the story short!



EXAMPLES cont'd...

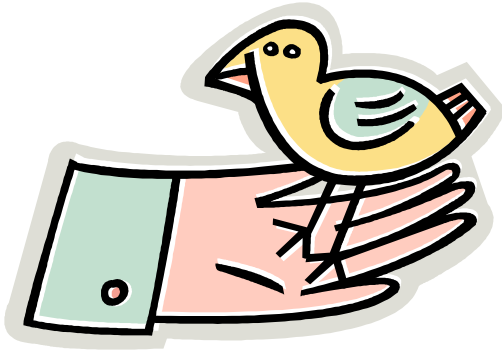
4. Listeners have responsibility to pull out **FACTORS AND CONDITIONS** which can be transferred to other situations, sectors and locations. They're the gold!
5. Write **FACTORS AND CONDITIONS** on file cards
6. Post cards
7. Cluster by theme

DEFINITION AND PRIORITIZATION OF THE FACTORS WHICH CONTRIBUTE TO THESE SUCCESSSES



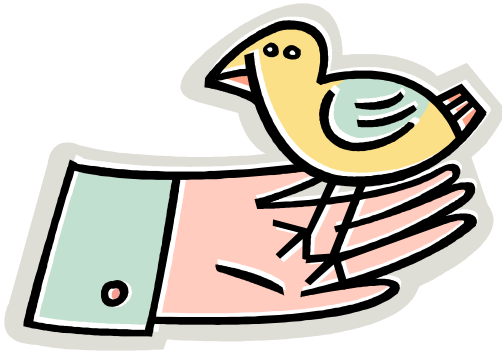
- We need to **DISTILL**, from the examples, the key **FACTORS AND CONDITIONS**
- **Prioritize these according to the MOST:**
 - powerful
 - effective **NOW** (in current political, economic, cultural, technical, climate)
 - practical and do-able
 - community building
 - important to you

DEFINITION AND PRIORITIZATION cont'd...



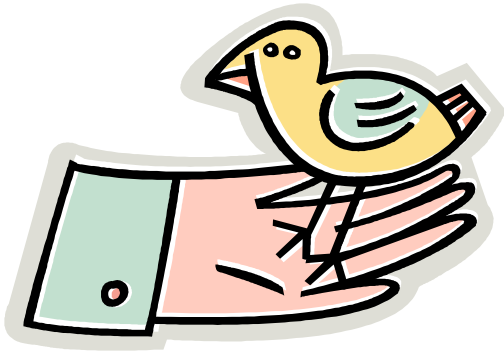
- **Vote with the 6 dots**
- ***The Top 1 – 3 priorities will form the basis for recommendations.***

GATHERING IDEAS FROM EVERYONE FOR DRAFTING RECOMMENDATIONS



**Anything you wish the persons drafting
the recommendations to keep in mind:**

- **Post on relevant flip chart**
- **Sign if you wish**



WRAP UP

- **Summary of next steps**
- **At tables, determine something of value you **ACQUIRED** during the day:**
 - someone you met?
 - some new idea?